



ABINGDON MG

PART OF THE DAVID MANNERS GROUP

MGA | MGB | MGC | MIDGET | MGF | MGTf | SPRITE | TR2-8 | SPITFIRE | HERALD | GT6 | STAG | DOLOMITE | MX-5



TRIUMPH SPITFIRE RETAIL PARTS GUIDE



0121 544 4444

E-MAIL: ENQUIRIES@DAVIDMANNERS.CO.UK
OR VISIT OUR OLDBURY TRADE COUNTER - B69 4RJ

WWW.DAVIDMANNERS.CO.UK

PARTS FOR CLASSIC MINI | JAGUAR & DAIMLER | MG & TRIUMPH | MORRIS MINOR | MX-5

THE DAVID MANNERS GROUP
PARTS FOR

MG, MX5 & TRIUMPH

ALL PRICES INCLUSIVE OF VAT

The David Manners Group now comprises of four of the most established market leaders in the car parts industry including Abingdon M G Parts Ltd, Mini Spares Centre Limited, and Morris Minor Centre (Birmingham) and supply parts for modern and classic Jaguar & Daimler, MG & Triumph, Mazda MX5, Classic Mini and Morris Minor cars.

We have access to over 28,500 parts and over 8,650 lines in stock now for MGA to MGTF, Triumph TR2 to TR8, Spitfire, 2000, 2500, MX5 Herald, GT6, Dolomite, Toledo, Austin Healey Sprite and AH 3000. Originally conceived in the late 1980s Abingdon MG Parts Ltd is a well-established and recognised player in the market.

We have access to over 28,500 parts
and over 8,650 lines in stock.

MAIL ORDER SERVICE

- Fast & efficient delivery service
- Delivery accross the entire United Kingdom
- Around 19,000 part lines available

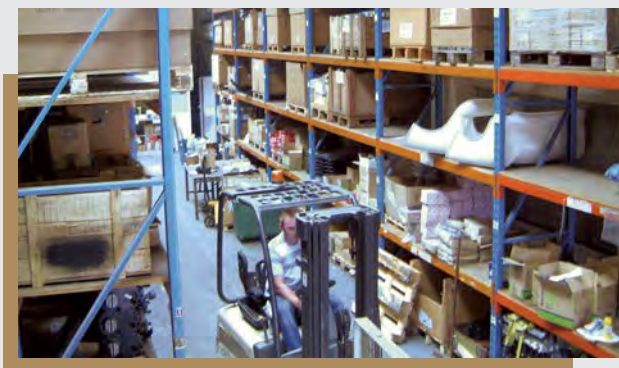


COUNTER SERVICE

- Knowledgable & friendly sales staff
- Showroom & catalogues to view
- 50 yards from J2 off the M5

ONLINE WEB ORDER

- Secure online site
- Full parts database available for viewing
- Log in facilities for trade & retail customers



WWW.DAVIDMANNERS.CO.UK

ENQUIRIES@DAVIDMANNERS.CO.UK

0121 544 4444



0121 544 4444

WWW.DAVIDMANNERS.CO.UK

ENQUIRIES@DAVIDMANNERS.CO.UK

TRIUMPH - SPITFIRE MKI-1500 Price List

PARTNO	DESCRIPTION	Parts 4 MG Triumph Cars TRIUMPH - SPITFIRE MKI-1500	Retail price	IncVat PRICE
Engine				
GEG183	TOP END SET MKI-II			
046172	CORE PLUG 1" DISHED SPIT GT6 TR250 TR6			
105114	CAMSHAFT LOCK PLATE TR250 TR6 GT6 SPIT15			
BP7ES	SPARK PLUG SPIT MGA S&M TR5 TR6			
NKC76	SUMP GSKT J TYPE O/D TR5 TR6 SPITFIRE			
AJM1149	TOP END SET MKIII-IV (early to FH25000E)			
AJM1209	TOP END SET MKIV (late from FH25001E)			
AJM1195	TOP END SET 1500			
GEG216	SUMP GASKET SET MKI-III (without oil seals)			
GUG701618CS	SUMP GASKET SET 1500			
AJM517	SUMP GASKET MKI-1500			
100499	TIMING COVER OIL SEAL MKI-III			
UKC1110	TIMING COVER OIL SEAL MKIV-1500			
143456	REAR CRANK OIL SEAL MKII-1500			
211126	GASKET TIMING COVER			
GEG615	GSKT MANIFOLD 1147 SPITFIRE MKI-II			
105121	HEAD STUD 4 1/4" MK1-4 & 1500			
121217	HEAD STUD 4 3/8" MK1-4 & 1500			
134464	INLET VALVE MK1-2			
126893	INLET VALVE MK3-4 1300cc TO FH25000E (1 1/4")			
145328	INLET VALVE MK4 1300cc FROM FH25001E (1 7/16")			
UKC2460	INLET VALVE 1500cc (1 3/8")			
131179	EXHAUST VALVE MK1-2 NON UNLEADED HEAD			
144965	VALVE EXHAUST SPIT13/1500 MIDGET15			
TT1315	EXHAUST VALVE MK1-1500cc FOR UNLEADED HEAD			
TT1226	ROCKER FEED KIT			
144343	SMALL CAM FOLLOWER TO APPROX 1965			
143552	LARGE CAM FOLLOWER (.75") FROM APPROX 1965			
105131	TIMING CHAIN SIMPLEX			
100499	TIMING COVER OIL SEAL MKI-III			
UKC1110	TIMING COVER OIL SEAL MK4-1500cc			
GLP145	OILPUMP MK1-4 (1300cc-1500cc TO FM59898E) VERTICAL			
GLP118	OILPUMP 1500cc FM59899>(CAN USE ON MK1-4) ANGLED			
AEM3353STD	MAINS STANDARD MK1-4 1300cc			
RTC1753	MAINS STANDARD 1500cc			
RTC1753AE	MAINS BEARINGS STD S1500 (AE)			
RTC1753/10	MAINS +10 MIDGET/SPIT 1500			
RTC1753/10/HD	MAINS +10 MIDGET/SPIT 1500			
RTC1753/20	MAINS +20 MIDGET/SPIT 1500			
RTC1753/30	MAINS +30 MIDGET/SPIT 1500			
138211	BIG ENDS STANDARD MK1-4 1300cc			
RTC1754	BIG ENDS STANDARD 1500cc			
132669	ENGINE MOUNTING MK1-3			
UKC5334	ENGINE MOUNTING MK4-1500cc			
CHA615	GEARBOX MOUNTING MK1-1500 (NON OVERDRIVE)			
159656	GEARBOX MOUNTING MK1-1500 (OVERDRIVE)			
ARA221	OIL COOLER 13 ROW (1500cc)			

TRIUMPH - SPITFIRE MKI-1500 Price List

PARTNO	DESCRIPTION	Parts 4 MG Triumph Cars TRIUMPH - SPITFIRE MKI-1500	Retail price	IncVat PRICE
TT1365	OIL COOLER INSTALLATION KIT (RUBBER PIPES)			
TT1367	OIL COOLER INSTALLATION KIT (S/S BRAIDED PIPES)			
TT1427	R/COVER POLISHED 1500 (TRIUMPH TUNE LOGO)			
GAC4067	R/COVER POLISHED 1300cc			
GUG5036VC	ROCKER COVER GASKET MIDGET/SPITFIRE 1500			
GUG5036VCOE	ROCKER COVER GASKET SPITFIRE MKI-1500			
GFE1037	AIR FILTER HS2 (1 1/4") 1300cc			
GFE1063	AIR FILTER HS4 SPIT/MIDGET 1500			
GFE150	FILTER OIL SPIT 1300/1500 & HER			
GFE150CG	OIL FILTER SPIT1500,MIDGET 1500			

Cooling - System

GWP200	WATER PUMP MK1-3			
138792	GSKT W/PUMP BODY TR6 SPIT T2000 GT6			
633679	FOAM GROMMET TR6 SPITFIRE			
154149	HOSE MANIFOLD SPITFIRE TR5 TR6			
GWP128	WATER PUMP MKIV-1500 (FIXED FAN)			
GWP205	WATER PUMP 1500cc (VISCOUS COUPLING)			
UKC3532	VISCOUS COUPLING			
GTS102	THERMOSTAT 74C			
GTS104	THERMOSTAT 82C STD			
GTS106	THERMOSTAT 88C			
156333	THERMOSTAT HOUSING SPITFIRE 62-78 TR250			
GTR108	TEMPERATURE TRANSMITOR			
GCB11038	FAN BELT MKI-III			
GCB11088	FAN BELT MK0 IV-1500cc			
RKC2126	FAN PLASTIC MK1-1500 (FIXED FAN)			
RKC2117	RADIATOR FULL WIDTH			
706843	RAD SHIELD LH SPITFIRE			
706844	RAD SHIELD RH SPITFIRE			
137632	RADIATOR OVERFLOW BOTTLE			
137743	OVERFLOW BOTTLE CAP			
GRH533KEV	TOP HOSE KEVLAR SPIT MKI-1500 GT6			
GRH265	BOTTOM HOSE MKI-IV (1300cc)			
GRH532	BOTTOM HOSE 1500cc			
GRC102	RADIATOR CAP 71b			
GRC180	RADIATOR CAP 131b			
132565	DRAIN TAP(WING TYPE)			
HK0002	HOSE KIT MKII-IV (1300cc)			
HK0001	HOSE KIT MKIV-1500cc			

Exhaust

TT1400	MANIFOLD TUBULAR MK3-1500			
GFK6630X	EXHAUST FITTING KIT MK4			
GFK6640X	EXHAUST FITTING KIT 1500cc			
FSTH37	EX.BOX REAR SPIT 62-67			
FSTH34	EX.PIPE FRONT SPIT 62-65			
FSTH35	MIDDLE SILENCER SPITFIRE 62-65			
FSTH36	LINK PIPE SPITFIRE 62-67			
FSTH37	REAR SILENCER SPITFIRE 62-65			
FSTH62	MIDDLE SILENCER SPITFIRE MKIII 67-70			
FSTH66	FRONT PIPE SPITFIRE MKIII 67-75			
FSTH67	REAR SILENCER SPITFIRE MKIII 67-70			
FSTH121	REAR FRONT PIPE SPITFIRE MKIV 70-75			

TRIUMPH - SPITFIRE MKI-1500 Price List

PARTNO	DESCRIPTION	Parts 4 MG Triumph Cars TRIUMPH - SPITFIRE MKI-1500	Retail price	IncVat PRICE
FSTH148	FRONT PIPE	SPITFIRE 1500 75 ON		
FSTH149	CENTRE PIPE	SPITFIRE 1500		
FSTH150	REAR SILENCER	SPITFIRE 1500 70>		
GEX7359K	EX.STRAP KIT SPIT			
GEX7360	EX.STRAP RUBBER LONG TR2-6	SPITFIRE GT6		
GEX7359	EX.STRAP RUBBER SHORT TR2-6	SPITFIRE GT6		
HRSU1585	EXHAUST BOX	SPITFIRE MKIII		
GEX7496	EXHAUST BRACKET	SPIT,IV-1500 >6 M3		
GEX1439	EXHAUST PIPE	SPITFIRE MKIV		
BSTH36	LINK PIPE	SPITFIRE 62-65		
RKC468	SILENCER SPIT 1500US			

Clutch - Components

HK8917	CLUTCH KIT	MIDGET/DOL/SPIT1500
HK6943	CLUTCH KIT	SPIT MKII-IV,HERALD
305936	CLUTCH PIPE LHD	SPITFIRE ALL MODELS
GCP230	CLUTCH PLATE	SPITFIRE/MIDGET 1500
GAC5053A	CLUTCH TOOL	SPR-SPIT I-IV
125217	MASTER CYLINDER	GAITER
GMC205	CLUTCH MASTER CYLINDER	(ALL MODELS)
122289	PEDAL RUBBER (CLUTCH & BRAKE)	MK1-3
150881	PEDAL RUBBER (CLUTCH & BRAKE)	MK4-1500cc
105143	SPIGOT BUSH	MK1-1500cc

Fuel

156137	CHOKE CABLE RHD	MKIV-1500cc
125170	FUEL HOSE CARB-CARB	TR7 SPIT DOL TR6 HER
156607	FUEL TRAP	TR6, SPITFIRE , TR7
100433	STUD PUMP TO BLOCK	SPIT GT6 TR5 TR6
156342	THROTTLE CABLE	MKIV-1500
156345	THROTTLE CABLE LHD	MKIV (1300cc)
156346	THROTTLE CABLE LHD	MKIV-1500cc
TKC2053	TANK SENDER UNIT	MK1-1500cc
ARA1502	TANK SENDER SEAL	
ARA1501	TANK SENDER LOCKING RING	
725117	PETROL CAP O.E.STYLE	VENTED MK1-1500cc
571086	LOCKING PETROL CAP	MK1-2
613506	PETROL CAP	VENTED MK1-3
GAC6001X	LOCKING PETROL CAP	TR5-6 + SPITFIRE
208493Z	FUEL PUMP	MK1-4 (STRAIGHT LEVER TYPE)
TKC3417Z	FUEL PUMP	1500cc
TS3395	FUEL TANK	SPITFIRE 71-80
311589	FUEL TANK	SPITFIRE 62-70
HFFK8	FUEL PIPE KIT TO	FH50000E
AUE587	CHOKE LEVER REAR LH	MGB SPITFIRE TR2 TR4
HFFK13	FUEL PIPE KIT FROM	FH50001E
HFFK9	FUEL PIPE KIT	MK1-3

Braking - Front

GBD154KIT	BRAKE KIT COMPLETE	SPITFIRE-HER-VITESSE
GBP166	BRAKE PAD SET	SPITFIRE MKI-II
GBP574	BRAKE PAD SET	SPITFIRE MKIII-1500
GBP574GS	GREENSTUFF PAD SET	SPITIII-15 HER & LOT

TRIUMPH - SPITFIRE MKI-1500 Price List

PARTNO	DESCRIPTION	Parts 4 MG Triumph Cars TRIUMPH - SPITFIRE MKI-1500	Retail price	IncVat PRICE
GBP574BORG&BECK	BRAKE PAD SET	SPITIII-15 HER & LOT		
GBD154	BRAKE DISC			
GBD154DGPAIR	BRAKE DISC DRILL/GRO	SPITFIRE-HER-VITESS		
GBD154EBC	EBC BRAKE DISC PAIR	SPITFIRE-HER-VITESSE		
GBD154K1	BRAKE KIT	SPITFIRE-HER-VITESSE		
GBD154KITUR	BRAKE KIT UPATED COMP	SPITFIRE-HER-VITESSE		
GBD154KIT	BRAKE KIT COMPLETE	SPITFIRE-HER-VITESSE		
TT3340	BRAIDED FRONT BRAKE HOSES	SPITFIRE MKI-1500 FR		
159130E	BRAKE CALIPER RH	SPITFIRE MKIV-1500 (exchange)		
159130	NEW CALIPER SPIT 67>	TYPE 14 RH		
159131E	BRAKE CALIPER LH	SPITFIRE MKIV-1500 (exchange)		
159131	NEW CALIPER SPIT 67>	TYPE 14 LH		
516212	CALIPER PISTON	MK3-1500		
512067SS	CALIPER PISTON S/S	SPITFIRE MKI-II		

Braking - Rear

201246KIT	BRAKE KIT COMPLETE	SPITFIRE MKI-1500
201246	BRAKE DRUM	
507865	SEAL KIT FOR	GWC1208
GRK2077	SEAL KIT FOR	GWC1110
120139	SEAL H/BRAKE LEVER	
TT3342	BRAIDED BRAKE HOSE	(to FH50000)
TT3442	BRAIDED BRAKE HOSE	(from FH50001)

Braking System

HGB6221	BRAKE PIPE SET RHD	SPITFIRE MK.1/2/3
HGB6222	BRAKE PIPE SET RHD	SPITFIRE MK.4
HGB6241	BRAKE PIPE SET RHD	SPITFIRE 1500 DUAL
DMG27	BRAKE HOSE KIT	SPITFIRE MKIV 73-80
DMG26	BRAKE HOSE KIT	SPITFIRE GT6 STAG TR4A
GBH175	BRAKE HOSE	SPITFIRE GT6 STAG TR4A
GBH175SS	BRAKE HOSE STAINLESS	SPITFIRE HER GT6 TR4A
121766	FRONT HANDBRAKE CABLE	
123135	BRAKE LEVER	SPITFIRE
133915	HANDBRAKE CABLE	SPITFIRE MKI-IV (to FH50000)
159372	HANDBRAKE CABLE	SPITFIRE MKIV (from FH50001)+ 1500
GMC220	BRAKE MASTER CYLINDER	(single line system)
122296	PUSH ROD M/CYL	SPITFIRE TR5 TR6 RHD
GMC224	BRAKE MASTER CYLINDER	SPITFIRE
GRSP2861	BRAKE CYL MNTG KIT	SPITFIRE / HERALD
HGB6226L	BRAKE PIPE SET LHD	SPITFIRE 1500 SINGLE
AAU2850	SEALS KIT FOR	GMC226
PFB450	BRAKE FLUID 5L	DOT4
GBH216	BRAKE HOSE	TR4A-SPIT-VIT6-HER
PFB425	BRAKE FLUID 250ML	D4
PFB405	BRAKE FLUID 5L	DOT4
PFB401	BRAKE FLUID 1L	DOT4
150881	PEDAL PAD	

Suspension - Front

209222	VERTICAL LINK RH	MKI (early to FC15575)
209223	VERTICAL LINK LH	MKI (early to FC15575)
POLYKIT1	POLYBUSH KIT	CAR SET SPITFIRE

TRIUMPH - SPITFIRE MKI-1500 Price List

PARTNO	DESCRIPTION	Parts 4 MG Triumph Cars TRIUMPH - SPITFIRE MKI-1500	Retail price	IncVat PRICE
POLYKIT1FT	POLYBUSH KIT FRONT SPITFIRE			
FSK105	FRONT SUSPENSION KIT SPITFIRE ALL			
205504	STEERING ARM RH MKI (to FC15575)			
205505	STEERING ARM LH MKI (to FC15575)			
UKC697	STUB AXLE SPITFIRE (ALL MODELS)			
GSJ155	TOP BALL JOINT			
GSJ266	VERTICAL LINK LH (from FC15576)			
QHQS88	SUSPENSION OVERHAUL KIT			
QHQS88ALH	BOTTOM TRUNNION KIT LH			
QHQS88ARH	BOTTOM TRUNNION KIT RH			
140919	TRUNNION RH			
140920	TRUNNION LH			
GSJ791Z	TRUNNION BUSH KIT (CAR KIT)			
GSJ791/1Z	BUSH KIT TRUNNION (PER SIDE)			
GHK1021	FRONT WHEEL BEARING KIT			
119272	UPPER WISHBONE ARM			
119451	RUBBER WISHBONE BUSH & BOTTOM SHOCK BUSH			
206685	WISHBONE LOWER RH			
206686	WISHBONE LOWER LH			
517985	SHOCK ABSORBER BUSH TOP			
122137	TOP MOUNTING FRONT SPRING			
GSV1030	FRONT COIL SPRING			
TT4301	FRONT COIL SPRING MKI-1500 (33011b) SL LOWERED			
TT4302	FRONT COIL SPRING MKI-1500 (33011b) LOWERED			
122022	SHIM FRONT SUSPENSIO SPIT-GT6-VIT-HER			

Suspension - Rear

305894	REAR SPRING MKI-III
159640Z	REAR SPRING NO BOX MKIV-1500
C8939A	BUSH REAR SPRING
GSA385	SHOCK ABSORBER REAR
102987	BUSH LOWER SHOCK ABSORBER
155930	RADIUS ARM REAR MKIV (late) 1500
119451	RUBBER BUSH REAR RADIUS ARM
132764	VERTICAL LINK L/H REAR
132763	VERTICAL LINK R/H REAR
151966	PIVOT BRACKET RH MKI-IV (early)
151967	PIVOT BRACKET LH MKI-IV (early)
159843	PIVOT BRACKET RH MKIV(late) 1500
159842	PIVOT BRACKET LH MKIV (late) 1500
305932	STEERING RACK RHD

Steering

GSJ158	TRACK ROD END
156170	STEERING WHEEL PAD SPIT, GT6, TR6
GSV1104/5	RACK GAITER SET
122718	END CAP STEERING COLGT6 TR4 TR5 SPITFIRE
128002	STEERING RACK BUSH SPIT GT6 TR4-6-250
156024	S/RACK HOLD DOWN TR4-6 SPIT GT6 T2000
209423	BUSH STEERING COLUMN TR4-6 SPITFIRE
139386X2	RACK MOUNTING TR4-6 GT6 DOL SPIT
EAW2270	GAITER TRACKROD END SPITFIRE TR4 TR4A
139386	RACK MOUNTING RUBBER

Quantities: 2+ £2.10

TRIUMPH - SPITFIRE MKI-1500 Price List

PARTNO	DESCRIPTION	Parts 4 MG Triumph Cars TRIUMPH - SPITFIRE MKI-1500	Retail price	IncVat PRICE
TT3255	SOLID RACK MOUNT KIT			
FAM1718	U/J COUPLING			
708479	ESCUTCHEON (to early 1500)			
611974	ESCUTCHEON O/D+IND			

Differential

RTC2305R	DIFF 3.89:1 SPIT USA (exchange)			
156903	BEARING SPACER CW&P SPIT TR6 STAG TR7			
134465	BEARING DIFF & O/D TR4 TR6 SPITFIRE GT6			
TKC3718R	DIFF 3.63:1 SPITFIRE 1500 (exchange)			
UKC3365	PLANET GEAR 1500			
DAM5079	DIFF NOSE SEAL			
514370	BUSH KIT CAR SET (rear axle)			
514370Z	BUSH KIT 1 SIDE (rear axle)			
GHK1029	REAR WHEEL BEARING KIT			
133568	DIFF MOUNT RUBBER (front upper)			
117578	BUSH DIFF MOUNT (rear)			
GUJ101Z	UNIVERSAL JOINT (sealed)			

Wheels & Trims

GAC8223X	13` MINILITE ALLOY			
514223A	BKT MOUNT & STRAP TR5 TR6 SPIT			
GAC2254X	WHEEL TRIMS 13IN X 4			
WWP466	WIRE WHEEL PAINTED			
WWC466	WIRE WHEEL CHROME			
WWC5729	WIRE WHEEL CHROME			
GAC7047X	WIRE WHEEL HUB KIT 2 EAR SPINNERS			
GAC7048X	WIRE WHEEL HUB KIT OCTAGON SPINNERS			
142598	WIRE WHEEL HUB LH			
142597	WIRE WHEEL HUB RH			
144504	NUT WIRE WHEEL ADAPTOR			
AHA7373/1	SPINNER RH 2 EAR 8TPI			
AHA7374/1	SPINNER LH 2 EAR 8TPI			
88G606/1	SPINNER RH OCTAGONAL			
88G607/1	SPINNER LH OCTAGONAL			
C27290	COPPER/HIDE HAMMER			
GAC4089	WIRE WHEEL BRUSH			
113087	NUT ROADWHEEL SPITFIRE I-III			
155751	WHEEL NUT CHROME SPITFIRE			
21H5774	WHEEL STUD SPITFIRE GT6			
155753	WASHER FOR WHEEL NUT SPITFIRE			
102689	WHEEL BEARING CAP TR2-6-SPIT-HER 62-80			
YKC1335	HUBCAP SILVER SPITFR			

Body Panels

WKC3450	BONNET MKIV-1500			
903088	FRONT WING LH SPITFIRE/GT6 MKI			
903089	FRONT WING RH SPITFIRE/GT6 MKI			
909663	FRONT WING LH MKIV-1500			
909664	FRONT WING RH MKIV-1500			
815391	FRONT 1/4 VALANCE LH MKIV-1500			
815392	FRONT 1/4 VALANCE RH MKIV-1500			
909351	FRONT OUTER WHEELARCH LH MKIV-1500			

TRIUMPH - SPITFIRE MKI-1500 Price List

PARTNO	DESCRIPTION	Parts 4 MG Triumph Cars TRIUMPH - SPITFIRE MKI-1500	Retail price	IncVat PRICE
909352	FRONT OUTER WHEELARCH RH MKIV-1500			
909797	FRONT INNER WHEELARCH LH MKIV-1500			
909798	FRONT INNER WHEELARCH RH MKIV-1500			
807136	VALANCE FRONT MKI-II			
811676	VALANCE FRONT MKIII			
815391	1/4 VALANCE LH FRONT MKIV-1500			
815392	1/4 VALANCE RH FRONT MKIV-1500			
TS12L	DOORSKIN LH MKIV-1500			
TS12R	DOORSKIN RH MKIV-1500			
903097	OUTER SILL LH MKI-1500			
903098	OUTER SILL RH MKI-1500			
TS18L	INNER SILL PANEL L/H MKI-1500			
TS18R	INNER SILL PANEL R/HMKI-1500			
TS13L	SILL END CAP LH MKI-1500			
TS13R	SILL END CAP RH MKI-1500			
TS22L	FLOOR PANEL L/H MKI-1500			
TS22R	FLOOR PANEL R/H MKI-1500			
WKC2466	REAR WING L/H MKIV-1500			
WKC2467	REAR WING R/H MKIV-1500			
TS66L	REAR LWR 1/4 REPAIR SPITFIRE MKI-III			
TS66R	REAR LWR 1/4 REPAIR SPITFIRE MKI-III			
TS20L	REAR WING REPAIR SPITFIRE MKI-1500			
TS20R	REAR WING REPAIR SPITFIRE MKI-1500			
TS21L	REAR WING REPAIR SPITFIRE MKIV-1500			
TS21R	REAR WING REPAIR SPITFIRE MKIV-1500			
911327Z	BOOT LID MKIV-1500			
718716	REAR INNER ARCH LH MKI-1500			
718717	REAR INNER ARCH RH MKI-1500			
TS51L	INNER REAR WING REP LH MKIV-1500			
TS51R	REAR INNER WING REP RH MKIV-1500			
TS46L	B POST MKI-1500			
TS46R	B POST MKI-1500			
TS52AL	A POST REPAIR L/H MKI-1500			
TS52AR	A POST REPAIR R/H MKI-1500			
TS52R	LOWER A POST REPAIR MKI-1500			
TS52L	LOWER A POST REPAIR MKI-1500			
142804SS	BRKT OVERFLOW BOTTLE SPITFIRE TR4A			
TS30	BOOT FLOOR PANEL MKI-1500			

Body Fittings

613296	SPITFIRE 4 BADGE MKI-II SPITFIRE
600949	BOOT HANDLE GASKET TR4-5 , SPITFIRE
603212	GASKET HINGE LARGE TR4-4A SPIT1-3
603382	DOOR HANDLES SPRING TR4-6SPIT1-3GT6M1-3 Quantities: 2+ £1.50
607823	HINGE PIN SPIT GT6 VITT TR4-6 Quantities: 2+ £3.60
611709	BRACKET TONNEAU SIDE TR4 , SPIT I
650313	PACKING SCREEN FRAME TR4-6 SPIT 1-3
611437X	METAL COVER TR4-6 SPIT MKI-III
632091	MIRROR HEAD ONLY SPIT GT6 TR5 TR6 TR7
713499	HOOD POPPER WHITE TR4-TR6 TR7 SPIT
621773P	DOOR LOCKS TR5 TR6 PR GT6MI-II SPITMII-I
713519	FIX WHITE BODY SPITFIRE TR6

TRIUMPH - SPITFIRE MKI-1500 Price List

PARTNO	DESCRIPTION	Parts 4 MG Triumph Cars TRIUMPH - SPITFIRE MKI-1500	Retail price	IncVat PRICE
RU608123	RIVET	SPITFIRE, TR6 TR7		
713501	SOCKET ON HOOD	TR6,SPIT		
621468	SPITFIRE SCROL BADGE	MKIII SPITFIRE		
625188	BADGE US SPEC	SPITFIRE 1500		
624730	BADGE MKIV BONNET	SPITFIRE MKIV		
624733	BADGE REAR WING	SPITFIRE MK IV		
612473	BOOT LID STAY	TR6 SPITFIRE		
YKC3778	BOOT TRIM BLACK TOP	SPITFIRE		
YKC1325	BOOT BLACK BOTT TRIM	SPITFIRE		
607663	BONNET LOCK	SPITFIRE SPITFIRE MKIII		

Chrome Fittings

706605	OVERRIDER FRONT LH S	SPIT I/II
706606	OVERRIDER FRONT RH S	SPIT I/II
706583	OVERIDER REAR LH	MKI-II
706584	OVERIDER REAR RH	MKI-II
707319	FINISHER-RR WING TOP	MKI-III
706556	FINISHER FF WING TOP	MKI-III
806189	SCREEN CAP	MKI-II
808231	SCREEN CAP	MKIII (early)
714429	SCREEN CAP	MKIII (late)
911106	SCREEN CAP	MKIV-1500
815137	B POST CAPPING LH	MKIV-1500
815138	B POST CAPPING RH	MKIV-1500

Windscreens & Glass

WKC4787	WINDSCREEN CLEAR	SPIT IV-1500
909029	WINDSCREEN SEAL	SPIT IV,1500
917248/9	SCREEN BEAD SET	SPIT IV-1500
917248	SCREEN BEAD LH	SPITFIRE
917249	SCREEN BEAD RH	SPITFIRE
913442KIT	SCREEN SEAL KIT	SPIT1-3,TR4-6,GT61-2
911106	SCREEN CAPPING	
WKC4647	DOOR GLASS	1500
612792	WEATHERSTRIP OUTER	
612806	WEATHERSTRIP INNER	
815015/6	W/SCREEN DRIP CHAN	SPIT,IV-1500 >6 M3

Interior Trim

TSC201A	SEAT COVERS KIT	BLACK MKI-II
618946	BEZEL CHOKE	SPIT, TR5 TR6
812761	VISOR BAR LH OUTER	TR5 TR6 SPIT3 GT6 2
812762	VISOR BAR RH OUTER	TR5 TR6 SPIT3 GT6 2
812711	VISOR DRIVERS	TR250 TR6 SPITFIRE
TSC202MBW	SEAT COVERS KIT	MKII-III MIDNIGHT BLUE
608454	HANDLE INTERIOR	SPITFIRE,TR4-4A
611102	INTERIOR MIRROR	TR4 EARLY SPIT
614090	REAR VEIW MIRROR	TR4 , EARLY SPIT
608454KIT	HANDLE KIT	SPITFIRE,TR4-4A
SCA7412	SEAT COVERS KIT	MATADOR RED MKIV 1970-72
SCA7421	SEAT COVERS KIT	BLACK MKIV-1500 1973 on
SCA7511	SEAT COVERS KIT	1500 BLACK/WHITE HOUNDSTOOTH
CSA6611	CARPET SET MOULDED	BLACK MKI-1500

TRIUMPH - SPITFIRE MKI-1500 Price List

PARTNO	DESCRIPTION	Parts 4 MG Triumph Cars TRIUMPH - SPITFIRE MKI-1500	Retail price	IncVat PRICE
HTK7050PA	PAIR DOOR PANELS BLACK MKI-II			
NSK3050PA	PAIR DOOR PANELS BLACK MKII-III			
TKP7511	PAIR DOOR PANELS BLACK MKIV-1500 (to FH113678)			
TKP7521	PAIR DOOR PANELS BLACK 1500 (from FH113679)			
TKP7611	QUARTER CASING SET BLACK MKIV-1500 (to FH113678)			
TKP7621	QUARTER CASING SET BLACK 1500 (from FH113679)			
630933	ARM SUN VISOR RH SPIT IV-1500 & GT6 Mk3			

Hood & Tonneau

TVH111	BLACK HOOD MKI/II PVC
TVH112	BLACK HOOD MKIII PVC
TVH113	BLACK HOOD MKIII PVC (ZRW)
XKC1781	BLACK HOOD MKIV-1500 PVC (ZRW)
XKC1781M	BLACK HOOD MKIV-1500 (MOHAIR)
822451	BLACK TONNEAU MKIV-1500 RHD
822491	BLACK TONNEAU MKIV-1500 RHD (Headrests)
816951Z	HOOD COVER BLACK MKIII
822401	HOOD COVER BLACK MKIV-1500

Electrical

GSB102	BRUSH SET(4 BRUSHES)
218959	IGNITION SWITCH SPIT IV-15 TR6 LATE
150380Z	LUCAS SWITCH H/LAMP TR6 GT6 SPITIV-1500
134301	EARTH LEAD SPITFIRE, TR4-6
150380LUCAS	LUCAS SWITCH H/LAMP TR6 GT6 SPITIV-1500
7H5045	STARTER MAIN SPRING
12G2102	PULLEY DYNAMO
AAU3956A	FAN ALTERNATOR
AEU1238	PULLEY ALTERNATOR 2.5IN DIA.
147899	ALTERNATOR BRACKET
156464	LINK ALTERNATOR (ADJUSTING)
214088R	AC DELCO DISTRIBUTOR MKIII + MKIV to FH25000 (exchange)
RKC5044	LUCAS DISTRIBUTOR 45D4 1500
GDC123	DISTRIBUTOR CAP AC DELCO MKI-IV
GCS1180E	POINTS SET LUCAS 45D4
BP6HS	SPARK PLUG MKI-II
BP6ES	SPARK PLUG MKIII-IV
N9YCC	SPARK PLUG MKIII-IV
BP5ES	SPARK PLUG 1500
N12YCC	SPARK PLUG 1500
GXE7714	WIPER MOTOR MKI-IV EARLY (exchange)
GXE7708	WIPER MOTOR MKIV (late) + 1500
147278Z	COLUMN SWITCH HEADLIGHTS MKI-III
152616	COLUMN SWITCH HEADLIGHTS MKIV-1500

Lighting

27H8499	HEADLAMP ASSEMBLY RHD
151353Z	BOOT LIGHT REPRO TR5 TR6 SPIT IV-1500
27H8499P	HEADLAMP RHD SPRIDGET-SPITFIRE
BAU2110	LOOM HEADLAMP (NO PILOT)
515218A	RIM LAMP RETAINING
SML4	INNER HEADLAMP BUCKET
SML3	HEADLAMP BUCKET METAL

TRIUMPH - SPITFIRE MKI-1500 Price List

PARTNO	DESCRIPTION	Parts 4 MG Triumph Cars TRIUMPH - SPITFIRE MKI-1500	Retail price	IncVat PRICE
SML3P	HEADLAMP BUCKET PLASTIC			
011730A	LENS LH AMBER MARKER MGB/C MIDGET SPIT			
011727A	LENS RH AMBER MARKER MGB/C MIDGET SPIT			
508162	SIDELIGHT BOOT MKI-II			
142002	NUMBER PLATE LAMP TR4-4A SPIT MKIII			
BHA5303	LAMP-NO PLATE CHROME MGB SPITFIRE USA			
215823	SEAL NO PLATE LAMP SPIT GT6			
BHA4966	INDICATOR-SIDELIGHT ASSEMBLY MKIII-1500			
520083	CLEAR LENS SIDELIGHT(CURVED) MKIII-1500			
516308	CLEAR LENS SIDELIGHT(PEAKED) MKIII-1500			
516306	AMBER LENS SIDELIGHT(PEAKED) MKIII-1500			
57H5572	GASKET INDICATOR SIDELIGHT MKIII-1500			
516304	RIM LENS RETAINING MKIII-1500			
217025	REAR LAMP ASSEMBLY STOP/TAIL MKI-III			
511800	REAR LENS MKI-III			
511802	GASKET REAR LENS-LAMP MKI-III			
AJA5073	GASKET REAR LAMP-BODY MKI-III			
AAU8163A	REAR FLASHER LAMP ASSEMBLY MKI-III			
516301	REAR INDICATOR LENS MKI-III			
TKC940	REAR LAMP ASSEMBLY LH MKIV-1500			
RTC1175	SEAL REAR LAMP-BODY MKIV-1500 (foam)			
520091	SEAL REAR LENS-BODY MKIV-1500 (foam)			
RTC1176	REAR LENS-FLASHER MKIV-1500			
RTC1177	REAR LENS-STOP MKIV-1500			
RTC1174	REAR LENS-REVERSE MKIV-1500			
718028	NUMBER PLATE LAMP MKIV-1500(to FH15999)			

Accessories

LFK317	FITTING KIT LUMENITION DELCO (optronic)			
BHH2039	CATALYST LABEL 1977 TR7 SPIT1500 TR6			
CHA599	LABEL EMISSION TR6 TR7 TR8 SPIT			
RTC9819CB	PARTS CAT.SPIT 1500 1975 ON			
511243	WORKSHOP MANUAL SPITFIRE MK 1,2,3			
809716	BOOT MAT SPITFIRE			
GAC6052X	LEATHER KEYFOB SPITFIRE			
LFK117	FITTING KIT LUMENITION 45D4 (optronic)			
PMA50	LUMENITION POWERPACK			
MTK007	IGNITION MODULE 45D4 (magnetronic)			
KN56-9121	K&N FILTER ASSEMBLY HS2			
KN56-1390	K&N FILTER ASSEMBLY HS4			
TT1226	ROCKER OIL FEED KIT			
TT1365	OIL COOLER KIT (rubber hoses)			
TT1367	OIL COOLER KIT (s/s hoses)			
TT1369	OIL COOLER KIT THERMOSTATIC (rubber hoses)			
TT1369S	OIL COOLER KIT THERMOSTATIC (s/s hoses)			
ARA221	OIL COOLER RADIATOR (13 ROW)			
GAC9501	CAR COVER (INDOOR)			
GAC9503	CAR COVER, OUTDOOR MKI,II,III			
GAC9503TPH	CAR COVER, OUTDOOR MKI,II,III (TRIUMPH LOGO)			
GAC9504	CAR COVER (OUTDOOR)			
GAC9504TPH	CAR COVER, OUTDOOR MKIV + 1500 (TRIUMPH LOGO)			
CBR1044	BOOT RACK ALUMINIUM/WOOD SLATS			
CBR1045	BOOT RACK ALUMINIUM			
CBR1150	BOOT RACK STEEL/WOOD SLATS			

TRIUMPH - SPITFIRE MKI-1500 Price List

PARTNO	DESCRIPTION	Parts 4 MG Triumph Cars TRIUMPH - SPITFIRE MKI-1500	Retail price	IncVat PRICE
CBR1151	BOOT RACK STEEL			
GAM211X	MIRROR RH (CONVEX)			
GAM212X	MIRROR LH (CONVEX)			
GAM215A	MIRROR RH (FLAT)			
GAM216A	MIRROR LH (FLAT)			
GAM105	MIRROR-RACING CHROME			
SBS300/30	STATIC SEATBELT			
SBS500/30	INERTIA SEATBELT			
AJM1112	AERIAL ASSEMBLY			
GAC8000X	HEADLAMP STONEGUARDS			
MLW1117B20	MOTALITA STEERING WHEEL BOSS MKI-1500 (up to 78)			
MLW1117B45	MOTALITA STEERING WHEEL BOSS 1500 (79 on)			
MLW1115-13	MOTALITA 13IN FLAT/WOOD/POLISHED SPOKES			
MLW1113-14	MOTALITA 14IN DISH/LEATHER/POLISHED SPOKES			
MLW1112-15	MOTALITA 15IN FLAT/LEATHER/BLACK SPOKES			
CM08A	CAR MATS SPITFIRE WITH BLACK BINDING MOULDED + LAUREL			

Body Seals

716630/1	BOOTLID SEAL	TR6 SPIT MKIV 1500
613954M	SCREEN BEAD/M	TR6 SPITFIRE

Gauges

600395	GAUGE GROMMET 1 3/8"	TR2 - TR6 TR7 SPIT
UKC2873	CABLE TACHO	TR5 TR6 TR250 SPIT G
134733	CABLE TACHO 31IN	TR250 TR6 >72 SPIT

Transmission

120953	SPRING (STEERING)	SPIT, TR4A-250, TR6
NKC53X	FILTER J O/D SUCTION	TR6 SPITFIRE
NKC87	GSKT J O/D LARGEREAR	SPITFIRE TR5 TR6
NKC107	O RING - J TYPE O/D	SPITFIRE TR5 TR6
NKC106	O RING-SPEEDO PINION	TR250 TR6 SPITFIRE
155249	INPUT SHAFT SPACER	SPITFIRE TR4A GT6
158732	SOCKET	TR4-6 61-76 SPIT GT6



0121 544 4444

WWW.DAVIDMANNERS.CO.UK

ENQUIRIES@DAVIDMANNERS.CO.UK